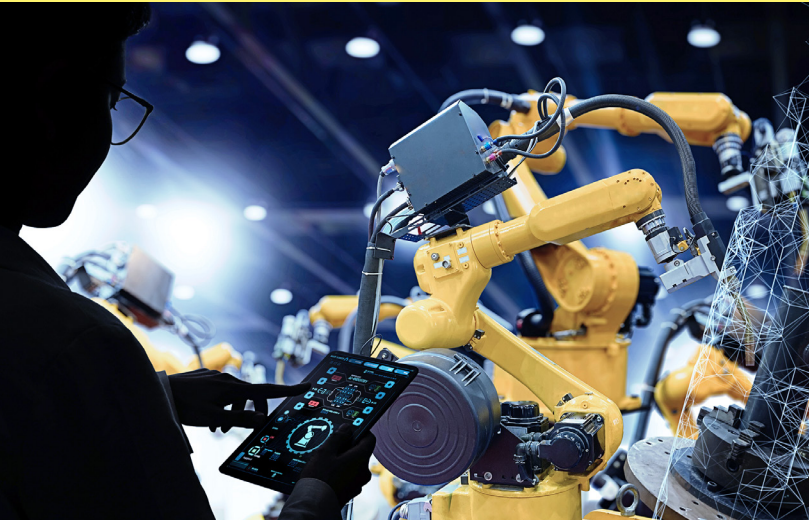


8-CHANNEL, 24 V FOR LOAD & VOLTAGE PROTECTION



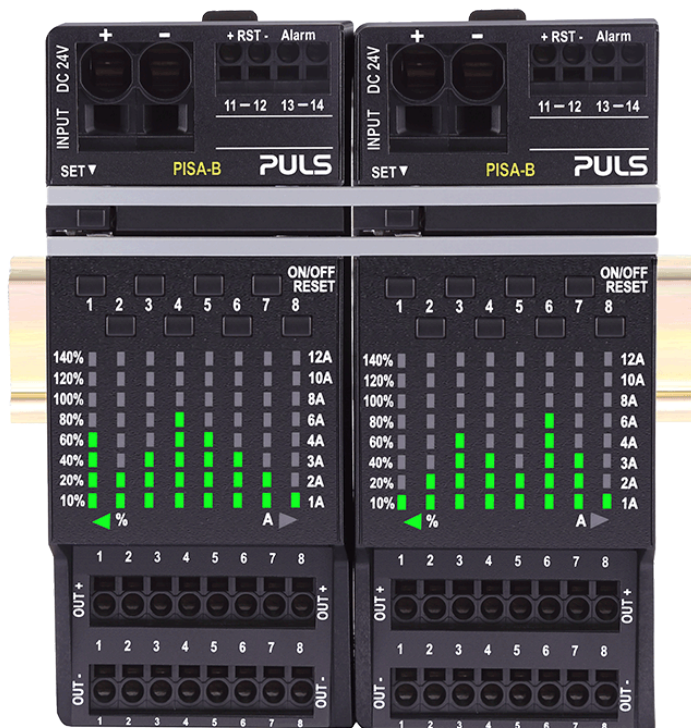
PULS offers numerous solutions for demanding applications. Among the most demanding are those that require current monitoring on multiple circuits from a single large power supply.

PULS has added to its PISA protection series by introducing four new 8-channel PISA-B electronic circuit breakers. The **PISA-B Series** are DIN rail mountable and feature eight isolated, individually adjustable channel protection modules with integrated electronic fuses for 24 V systems. They distribute the current of a large power source to eight independent output channels.

If an overload or short condition occurs on one or more of the channels, that channel is tripped, to protect and maintain the other loads, as well as output of the 24 VDC power supply.

TECHNICAL HIGHLIGHTS

- » Compact: **Only 52 mm Total Width!** (6.5 mm per channel)
- » 8 Isolated, Independent Channels
- » Adjustable Output Current for Each Channel
- » Tool-Free Installation via Push-In Terminals
- » 2 Channels for High Capacitive Loads (up to 12 A)
- » Wide Operating Temperature Range (-25° C to 70° C)
- » Reliable Channel Tripping with a Fail-Safe Switch



PISA-B Electronic Circuit Protection Modules

CUSTOMER BENEFITS

- » **Pass Through Wiring:** Positive & negative terminals included
- » **Flexible:** Selectable slow or fast tripping characteristic
- » **Secure:** Units can be locked with a 4-digit PIN code
- » **Status Indicator:** LED matrix display of each output channel to provide visual indicators to understand and evaluate loads, detect peak currents & change settings
- » **Resettable:** Remote reset or local reset via pushbuttons
- » **ON/OFF feature** for each individual output
- » **Alarm Signal:** Common relay contact or digital coded signal
- » **Safety:** NEC Class 2 models available



pulspower.us

Technical Inquiries:
info@puls-us.com

Customer Service:
630.587.9780